

# Evolution and inheritance - Year 6

Previous Learning:

In Year 2, you look at different habitats, and learnt that animals, including humans, have offspring which grow into adults. In Year 3, you learnt about the life cycle of flowering plants, including pollination, seed formation and seed dispersal. You also described how fossils are formed. In Year 4, you learnt that environments can change and that this can sometimes pose dangers to living things. In Year 5, you researched the Life process of reproduction in some plants and animals.

Adaptive Traits are characteristics that are influenced by the environment the living things live in. These adaptations can develop as a result of many things, such as food and climate. Eye colour is an example of an inherited trait, but so are things like hair colour, the shape of your earlobes and whether or not you can smell certain flowers.

Fossils are the preserved remains, or partial remains of ancient animals and plants. Fossils let scientists know how plants and animals used to look millions of years ago. This is proof that living things have evolved over time.

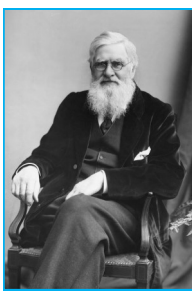


Evolution is the gradual process by which different kinds of living organism have developed from earlier forms over millions of years. Scientists have proof that living things are continuously evolving - even today!

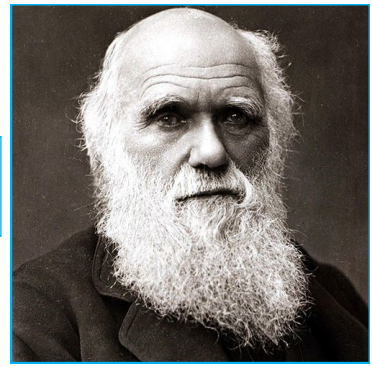
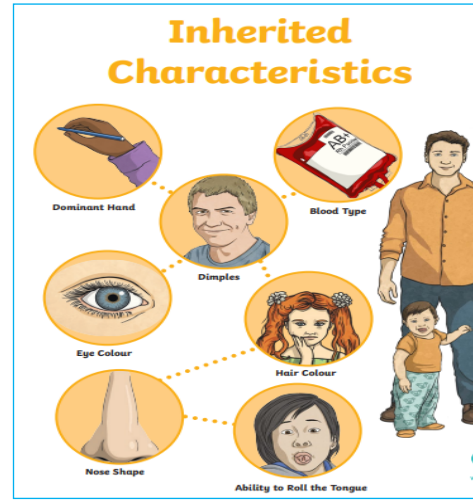


Animals and plants produce offspring that are similar but not identical to them. Offspring often look like their parents because features are passed on.

In the same way that there is variation between parents and their offspring, you can see variation within species, even plants.



Alfred Russel Wallace  
and  
Charles Darwin



Key vocabulary	Definitions
evolution	Adaptation over a very long time.
environment	An environment contains many habitats and
fossils	The remains or imprint of a prehistoric plant
offspring	The young animal or plant that is produced by
inheritance	This is when characteristics are passed on to offspring from their parents.
variations	The difference between individuals within a species.
characteristics	The distinguishing features or qualities that are specific to a species.
adaptation	An adaptation is a characteristic changing to increase their chance of surviving and reproducing.
habitat	A specific area or place in which animals and plants can live.
natural selection	The process where better adapted living things survive more than others.
inherited traits	These are the traits you get from your parents.

Future learning:

In secondary school, you will continue to learn about Genetics and Evolution. You will focus on how genetic information is passed through generations and differences between species. You will look at how changes in the environment may leave individuals within species, or sometimes entire species, less well adapted.