

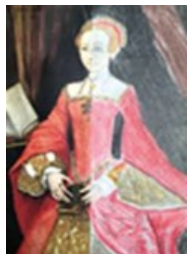


# The Tudors (Hans Holbein)

## Art

### Key knowledge:

- Hans Holbein was a German painter renowned for the precise rendering and compelling realism of his portraits.
- To create a realistic portrait you need to consider perspective and proportion.
- To use a medium for effect—watercolour.
- To add texture to a drawing before moving on to paint.
- Proportion is the how size of an images in art relate to each other e.g the height, width and depth .
- Scale refers to the size of an object in relationship to another object.
- Perspective is the representation of three-dimensional objects or spaces in two dimensional artworks



We are learning to draw and paint a portrait using watercolours as a medium choice.

### Mood creation in a portrait:



### Hans Holbein (1497-1542)

Hans Holbein 'the Younger' was a German artist and printmaker. Holbein was born in 1497 into a family of important artists.

He is considered as one of the finest and most accomplished portraitists of the 16th century . He is well known for his painting of royalty at the Tudor court and he was well liked by Henry VIII.



Examples of Holbein's work:



**Previous knowledge** In Year 2 the children have learnt to colour mix, creating tints by adding white and experiment with different thickness of brushes for a particular effect.

In Year 1, children sketched portraits using lines, curves and experimented with hatching.

In Year 2, children learnt to add tone and texture using sketching pencils when drawing. Children have been making connections between colours: mood and emotion.

### Key vocabulary

<b>Watercolours</b>	A choice of paint that artists choose for an emotional connection
<b>Mood</b>	Drawing or painting using small dots or specks.
<b>Blending</b>	Blending is a painting technique where two different colours are slightly mixed together when wet.
<b>Background</b>	Smudging is to rub, dab or swipe in a smeary manner
<b>Perspective</b>	the representation of three-dimensional objects or spaces in two dimensional artworks
<b>Proportion</b>	How sizes the of images in art relate to each other e.g the height, width and depth